



Educating and Inspiring All Learners



Budget Consultation
Public Meeting
March 8, 2016



Board of Trustees

Ward 1 (3 trustees) – Municipality of Swan Valley West

Kelli Riehl – Vice Chair

Vivian Rooks

William (Bill) Schaffer – Chair

Ward 2 (3 trustees) – Municipality of Minitonas-Bowsman and parts of RM of Mountain

Donna L. D. Burghart

Laurie Evans

Kathy Highmoor

Ward 3 (3 trustees) – Town of Swan River

Sharla Haluschak

Brett Stephen

Gary Wowchuk



	Budget 2016/17	Budget 2015/16	(Decrease)	Inc/(Dec)
Revenue:				
Provincial Government	14,904,507	14,805,079	99,428	0.67%
SVSD Special Requirement	8,362,534	8,040,898	321,636	4.00%
Less: Education Property Tax Credit	(1,579,321)	(1,567,318)	(12,003)	0.77%
Less: Tax Incentive Grant	(1,056,497)	(1,056,497)	0	0.00%
Other School Divisions	26,000	26,000	0	0.00%
First Nations	189,500	150,220	39,280	26.15%
Private and Other School Divisions	259,400	245,800	13,600	5.53%
Other Sources	76,400	73,400	3,000	4.09%
Total Revenue	21,182,523	20,717,582	464,941	2.24%
Expenditures:				
Salaries	15,791,236	15,141,270	649,966	4.29%
Benefits	1,467,719	1,626,403	(158,684)	(9.76%)
Services	1,989,214	1,896,821	92,393	4.87%
Supplies, Materials, Equipment	1,532,001	1,626,248	(94,247)	(5.80%)
Fiscal & Capital	484,931	474,931	10,000	2.11%
Total Expenditures and Transfers	21,265,101	20,765,673	499,428	2.41%
Net Current Surplus (Deficit)	(82,578)	(48,091)	(34,487)	



Swan Valley School Division

OPEN DOOR CAREER PLANNING

Student and Family Information Evening

✦ Grades 6 to 8 students along with their parents and guardians are invited to attend an information evening.

Participants will:

- ✦ Learn how to plan for career success through choosing optimal educational pathways to graduation.
- ✦ Hear what industry is saying about being prepared for the workplace.
- ✦ Review post-secondary options including, apprenticeship, college and university opportunities.

Wednesday, February 17th, 2016

7:00 p.m.



Hosted at
Swan Valley Regional Secondary School Cafeteria



Educated and Inspired to Reach Excellence

Excellence is never an accident. It is always the result of ***focused intention, sincere effort*** and ***intelligent, skillful execution***. It represents ***wise choices*** among many alternatives.

Albert Einstein



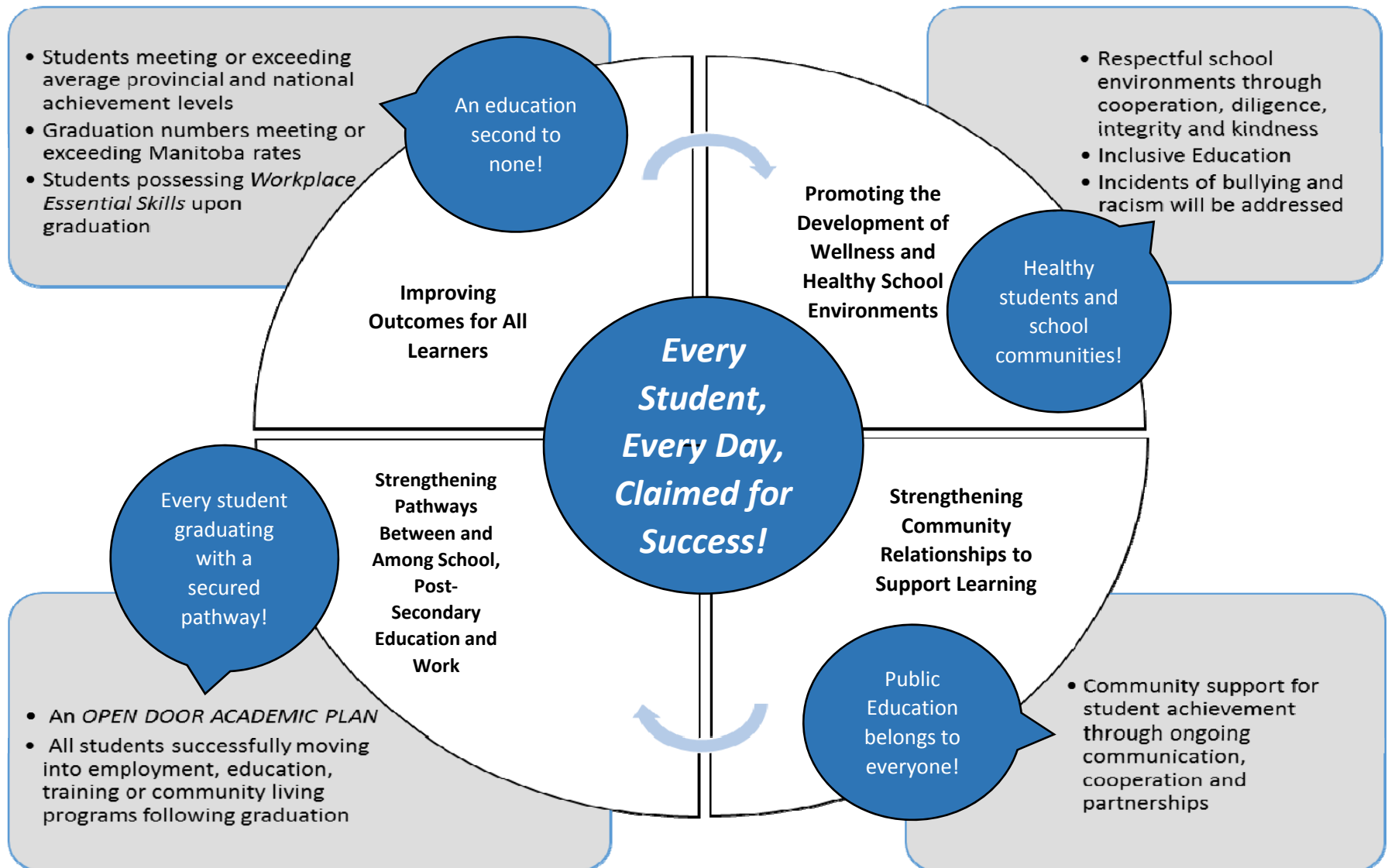
How does the Swan Valley School Division define excellence in education?

- Success involves student safety, intellectual challenge and high levels of academic learning.
- Students develop social and emotional competence when educated in a safe, respectful and mature environment.
- Success requires standing with and for all members of the school community.

***EVERY STUDENT,
EVERY DAY,
CLAIMED FOR
SUCCESS***



Swan Valley School Division "Claimed for Success 2014-2017"





Swan Valley School Division

2015-2016

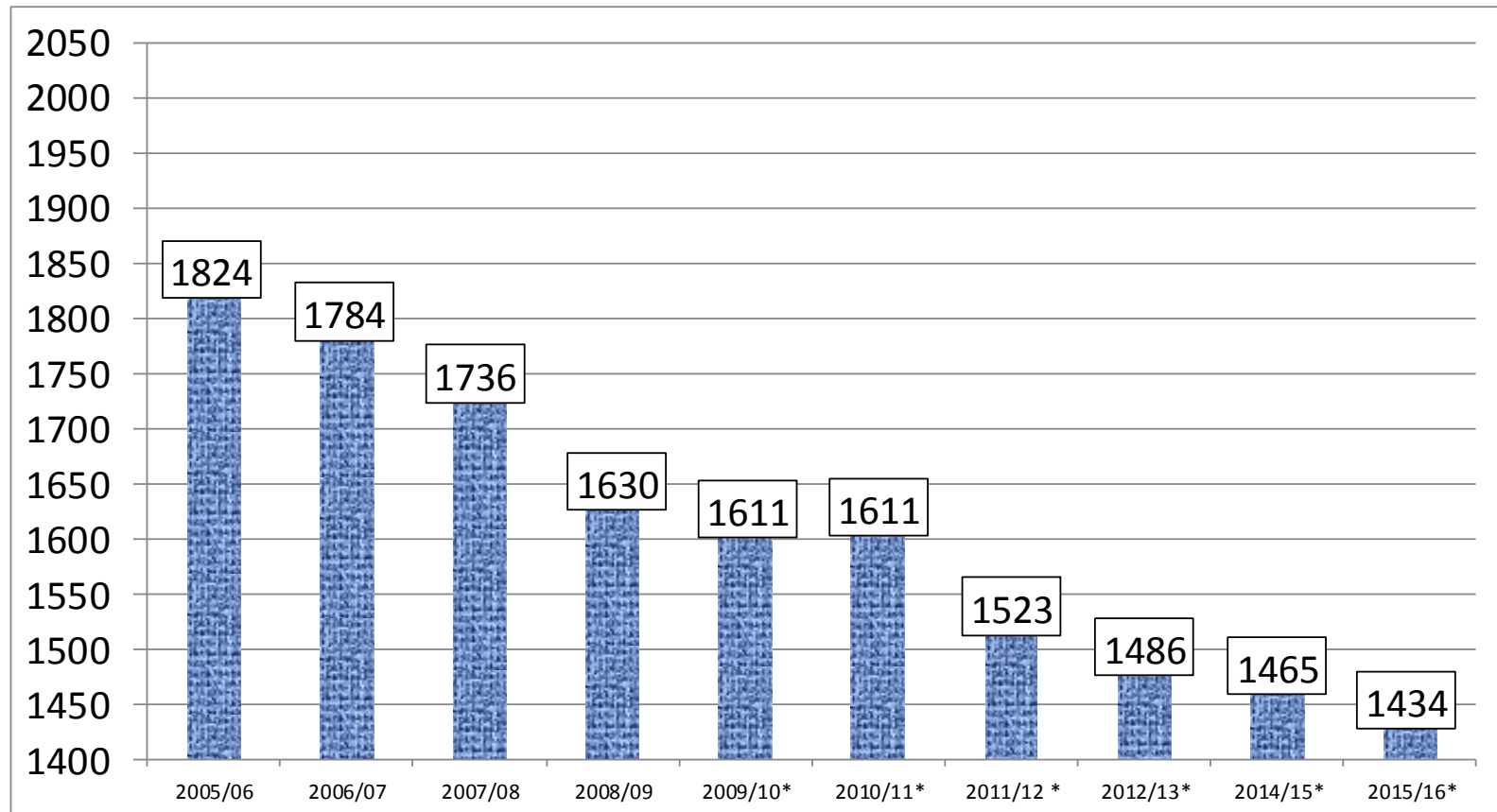
- 1,484 Students (Sept 30, 2015)
- 3636.4 Square Kilometers
- 9 Schools
- 9 Trustees
- 276 Staff (not FTE, excludes casual & subs)
 - 121 teachers
 - 155 clerical, educational assistants, library assistants, bus drivers, mechanics, custodial, maintenance, cleaners, etc.
 - 33 casual employees
 - 31 substitute teachers

Enrollment	Jan. 2016	Sept. 2015	Sept. 2014	Sept. 2013
Kindergarten (JK & SK)	143	143	160	192
Early Years (Gr. 1-4)	444	442	459	451
Middle Years (Gr. 5-8)	426	424	405	418
Senior Years (Gr. 9-12)	474	475	495	520
Total	1,487	1,484	1,519	1,581
Junior Kindergarten	49	50	54	65



Enrollment Trends (10 year)

Swan Valley School Division 10 Year Enrollment Summary



* Excludes Junior Kindergarten students



January 2016 Enrollment

	JK	K	1	2	3	4	5	6	7	8	9	10	11	12	Total
Benito School	11	14	12	8	6	9	9	7	8	13					97
Birch River School	2	4	4	5	7	4	3	11	2	9					51
Bowsman School	7	3	6	14	7	2	7	7	7	7					67
Ecole Swan River South	18	14	15	16	11	6	6	44	64	71					265
Heyes Elementary School		21	16	29	30	14	24	20							154
Minitonas Early Years School	11	4	14	13	14	14									70
Minitonas Middle Years School							21	17	10	17					65
Swan Valley Regional Secondary School											110	117	109	138	474
Taylor School		34	35	45	38	50	42								244
Total	49	94	102	130	113	99	112	106	91	117	110	117	109	138	1,487



Kindergarten (JK) Trends 2010-2016

	Actual Sept. 2010 *	Actual Sept. 2011 *	Actual Sept. 2012 *	Actual Sept. 2013 *	Actual Sept. 2014 *	Actual Sept. 2015*	Estimated Sept. 2016 *
Benito School	14	7	9	11	13	11	10
Birch River School	5	7	11	3	7	2	2
Bowsman School	10	9	12	5	3	7	8
Ecole Swan River South	0	23	28	34	29	19	15
Heyes Elementary School	0	0	0	0	0	0	0
Minitonas Early Years School	0	0	12	12	2	11	13
Taylor School	0	0	0	0	0	0	0
Total	29	46	72	65	54	50	48

- excludes Sr. Kindergarten: 109-2010; 105-2011; 113-2012; 127-2013; 106-2014; 103-2015; 92-2016



Kindergarten ^(SK) Trends 2010-2016

	Actual Sept. 2010 *	Actual Sept. 2011 *	Actual Sept. 2012 *	Actual Sept. 2013 *	Actual Sept. 2014 *	Actual Sept. 2015 *	Estimated Sept. 2016 *
Benito School	8	12	8	6	12	14	12
Birch River School	2	5	8	6	4	4	2
Bowsman School	13	12	7	13	6	4	7
Ecole Swan River South	10	6	17	17	20	13	10
Heyes Elementary School	21	13	30	28	17	21	20
Minitonas Early Years School	19	9	13	13	14	4	11
Taylor School	36	48	30	44	33	33	30
Total	109	105	113	127	106	93	92

- excludes Junior Kindergarten: 24-2009; 29-2010; 46-2011; 72-2012; 65-2013; 54-2014; 50-2015, 48-2016
(Sept. 2011 first year for JK at ESRSS)



Enrollment Trends 2009-2016

	Actual Sept. 2009 *	Actual Sept. 2010 *	Actual Sept. 2011 *	Actual Sept. 2012 *	Actual Sept. 2013 *	Actual Sept. 2014 *	Actual Sept 2015 *	Actual Jan 2016 *	Est. Sept. 2016 *
Benito School	83	81	91	87	77	80	87	86	85
Birch River School	71	63	72	66	64	57	46	49	42
Bowsman School	92	105	94	80	90	68	61	60	59
Ecole Swan River South School	237	241	247	237	239	241	245	247	244
Heyes Elementary School	128	129	129	146	150	153	153	154	152
Minitonas Early Years School	84	90	77	77	82	77	55	59	56
Minitonas Middle Years School	105	101	80	84	62	56	62	65	62
Swan Valley Regional Secondary School	583	572	511	497	514	495	475	474	475
Taylor School	<u>228</u>	<u>229</u>	<u>222</u>	<u>212</u>	<u>238</u>	<u>238</u>	<u>250</u>	<u>244</u>	<u>232</u>
Total	1,611	1,611	1,523	1,486	1,516	1,465	1,434	1,438	1,407

* 2009 excludes Junior K ~ 7-Benito; 4-Birch River; 13-Bowsman

* 2010 excludes Junior K ~ 14-Benito; 5-Birch River; 10-Bowsman

* 2011 excludes Junior K ~ 7-Benito; 7-Birch River; 9-Bowsman; 23-ESRSS

* 2012 excludes Junior K ~ 9-Benito; 11-Birch River; 12-Bowsman; 28-ESRSS; 12-Minitonas Early

* 2013 excludes Junior K ~ 11-Benito; 3-Birch River; 5-Bowman; 34-ESRSS; 12-Minitonas Early

* 2014 excludes Junior K ~ 13-Benito; 7-Birch River; 3-Bowman; 29-ESRSS; 2-Minitonas Early

* 2015 excludes Junior K ~ 11-Benito; 2-Birch River; 7-Bowsman; 19-ESRSS; 11-Minitonas Early

* 2016 excludes Junior K ~ 10-Benito; 2-Birch River; 8-Bowsman; 15-ESRSS; 13-Minitonas Early



2016/17 Budget Funding History

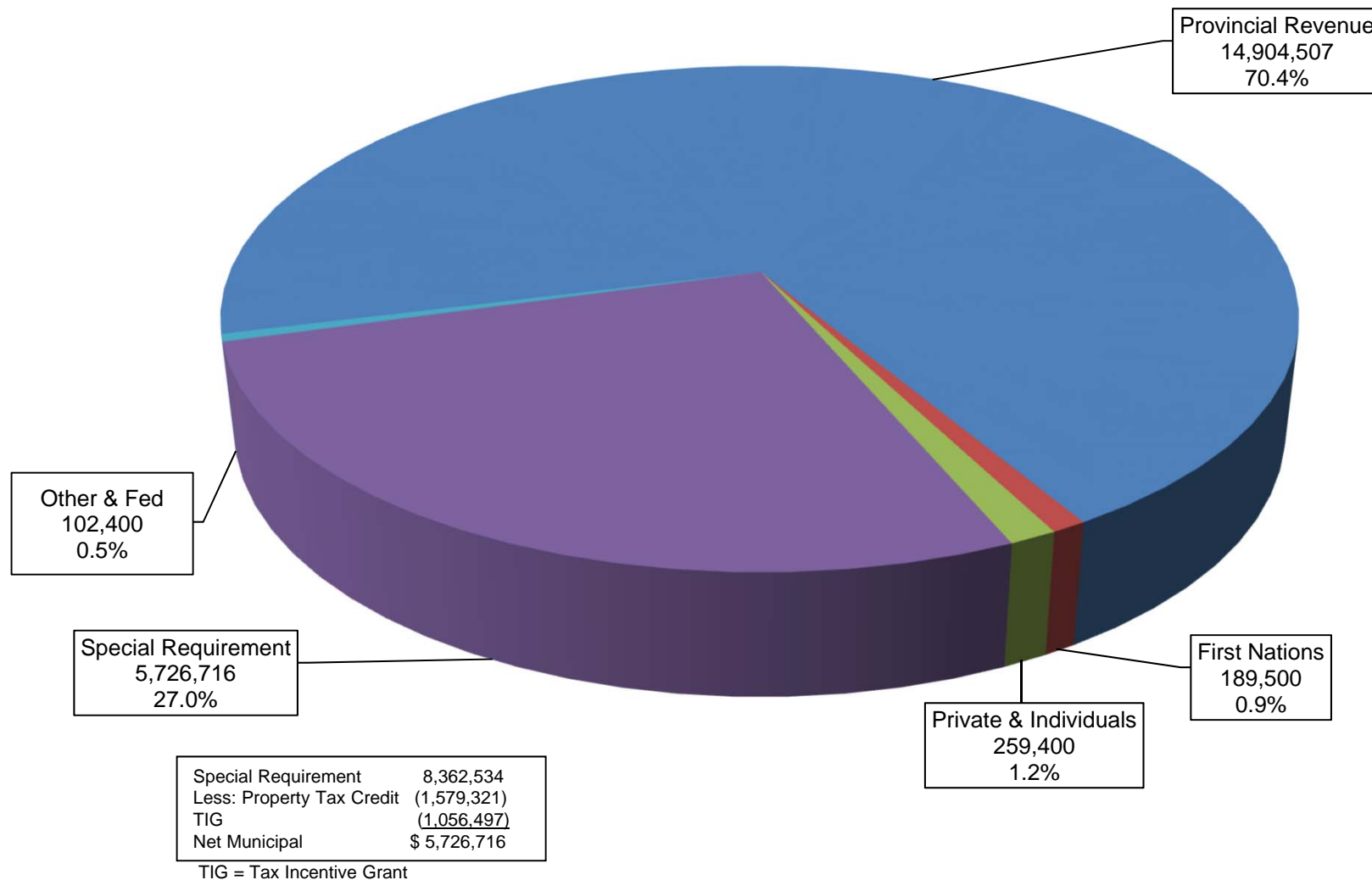
		Total	Prov. Funding of Schools Program	Formula Guarantee (a)	Municipal Gov't	Operating Expenditures	Cost Per Pupil	Sept 30, 20xx Total Enrolment	Sept 30, 20xx Prov. Funded Enrolment
	Fiscal Year	Prov. Support							
Actual	2010/11	14,138,446	11,162,075	81,886	4,555,272	18,584,587	11,929	1,640.0	1,511.6
Actual	2011/12	14,662,850	11,441,779	256,824	4,793,519	19,203,822	13,060	1,569.0	1,437.5
Actual	2012/13	15,059,052	11,701,953	0	4,791,864	19,678,799	13,661	1,558.0	1,394.2
Actual	2013/14	15,113,965	11,701,953	35,751	5,016,812	20,148,323	13,740	1,581.0	1,407.3
Actual	2014/15	15,104,100	11,706,056	216,593	5,203,201	19,900,753	13,961	1,519.0	1,371.6
Budget [c]	2015/16	14,805,079	11,701,953	33,255	5,417,083	20,616,342	14,849	1,527.0	1,373.0
Est. (d)	2015/16	15,115,116	11,706,056	284,332	5,417,083	TBA	TBA	1,484.0	1,352.1
Draft Budget	2016/17	14,904,507	11,706,056	689,976	5,726,716	21,115,770	15,367	1,451	1,322.0
Notes:									
(a)	For the 2012/13 fiscal year changed the Formula Guarantee Funding from MB growth to zero increase								
(b)	The staff count at Sept 30, 20xx usually does not reflect the average nor the peak								
[c]	Amounts shown reflect budget as passed in March 2015								
(d)	Provincial Funding as estimated in November 2015. It will change between now and June 30, 2016								



2016/17 Draft Budget Sources of Revenue

As at March 7, 2016

Total Revenue - \$21,182,523 Includes Tax Incentive Grant at 2011 Level





Swan Valley School Division Compared

Based on 2015/16 Budget	Provincial Average	S.V.S.D.
<u>Revenue</u>		
Provincial Government	61.8%	71.5%
Federal Government	0.2%	0.0%
Municipal Government – Property Tax	32.4%	26.1%
Other School Division	0.5%	0.1%
First Nations	4.1%	0.7%
Private Organizations and Individuals	0.8%	1.2%
Other Sources	<u>0.2%</u>	<u>0.4%</u>
	100.0%	100.0%



EXPENSES DEFINITION

Operating Fund - consists of the nine functions defined below:

Function 100 - Regular Instruction - Consists of costs related directly to the K - 12 classroom (e.g. teachers, educational assistants, textbooks, related supplies, services and equipment such as desks, chairs, audio-visual equipment and computers). Also includes school based administration costs including principals, vice-principals and support staff.

Function 200 - Student Support Services - Consists of costs specifically related to students who have exceptional learning needs, as well as counselling and guidance and resource costs for all students. Students with exceptional learning needs are students who have physical, cognitive, sensory, or emotional/behavioural disabilities or who are identified as gifted. These costs would include special education and resource teachers, special needs educational assistants, counsellors, clinicians, and related and appropriate services (e.g. occupational therapists), supplies, textbooks, materials, equipment and software. Special education co-ordinators or student services administrators and clerical staff are also included.

Function 300 - Adult Learning Centres - Consists of costs related to Adult Learning Centres (ALC) owned and operated by school divisions. ALC's offer adult centred programs in which adult education principles and practices are applied to curriculum and program delivery. Does not include costs associated with adults in the regular classroom. Also, does not include costs associated with ALC's that are governed by their own board of directors.

Function 400 - Community Education and Services - Consists of costs related to providing services (such as community use of facilities and gym rentals) and non-credit courses to community groups and individuals. Includes pre-kindergarten education.

Function 500 - Divisional Administration - Consists of costs related to the administration of the school division including the board of trustees and the superintendent's and secretary-treasurer's departments.

Function 600 - Instructional and Other Support Services - Consists of costs related to support services for students, teaching staff and the educational process, such as libraries/media centers, professional development, and curriculum consulting and development.

Function 700 - Transportation of Pupils - Consists of all costs, including supervisory and clerical personnel, related to the transportation of pupils. Does not include the purchase of school buses over \$20,000 per unit as they are recorded in the capital fund.

Function 800 - Operations and Maintenance - Consists of all costs, including supervisory and clerical personnel, related to the upkeep, maintenance and minor repair of all school division buildings and grounds. Includes utilities, taxes, insurance and supplies. Does not include capital costs.

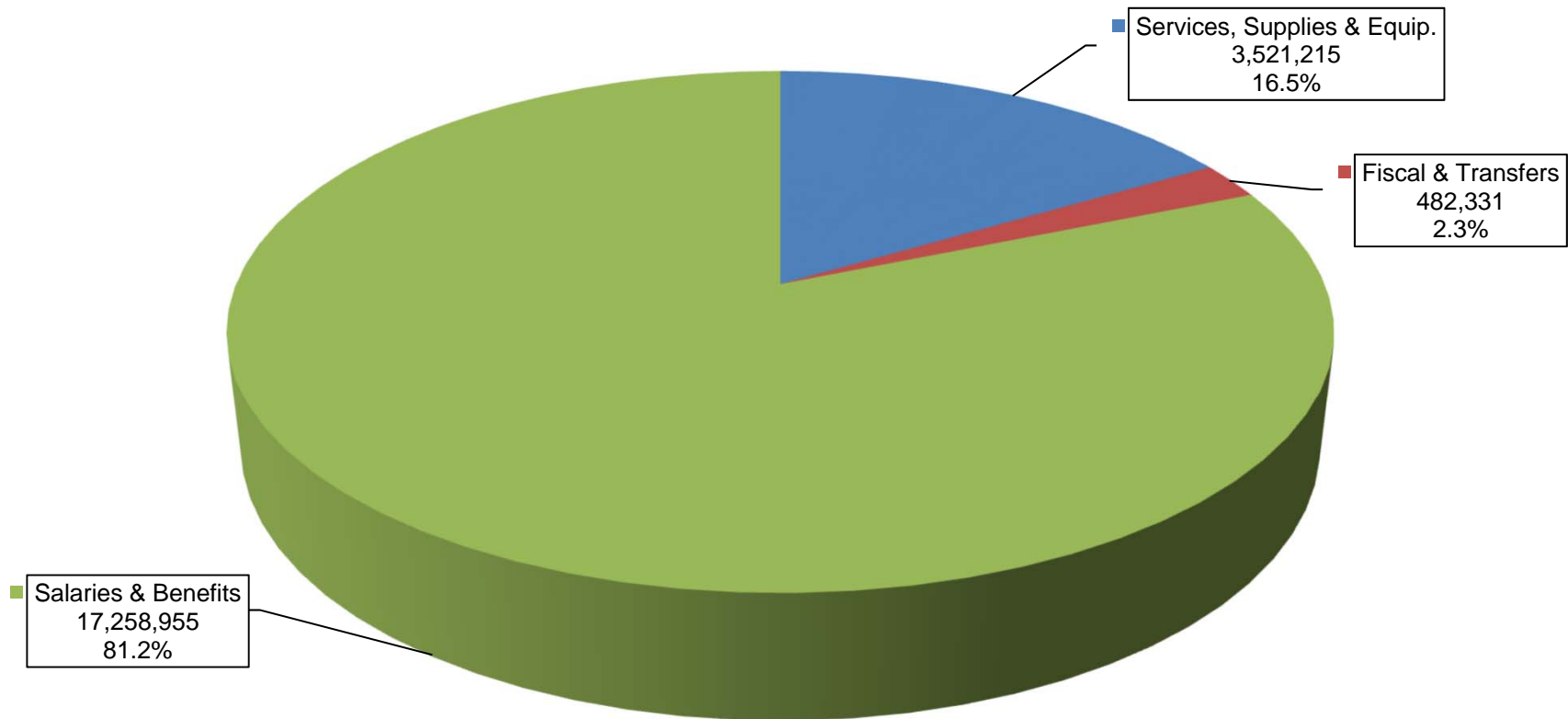
Function 900 - Fiscal - Consists of short-term loan interest, bank charges, bad debts expense and the Health and Education Levy.



2016/2017 DRAFT BUDGET

Breakdown of Division Expenditures

as at March 7, 2016
Total Expenditures - \$21,265,101

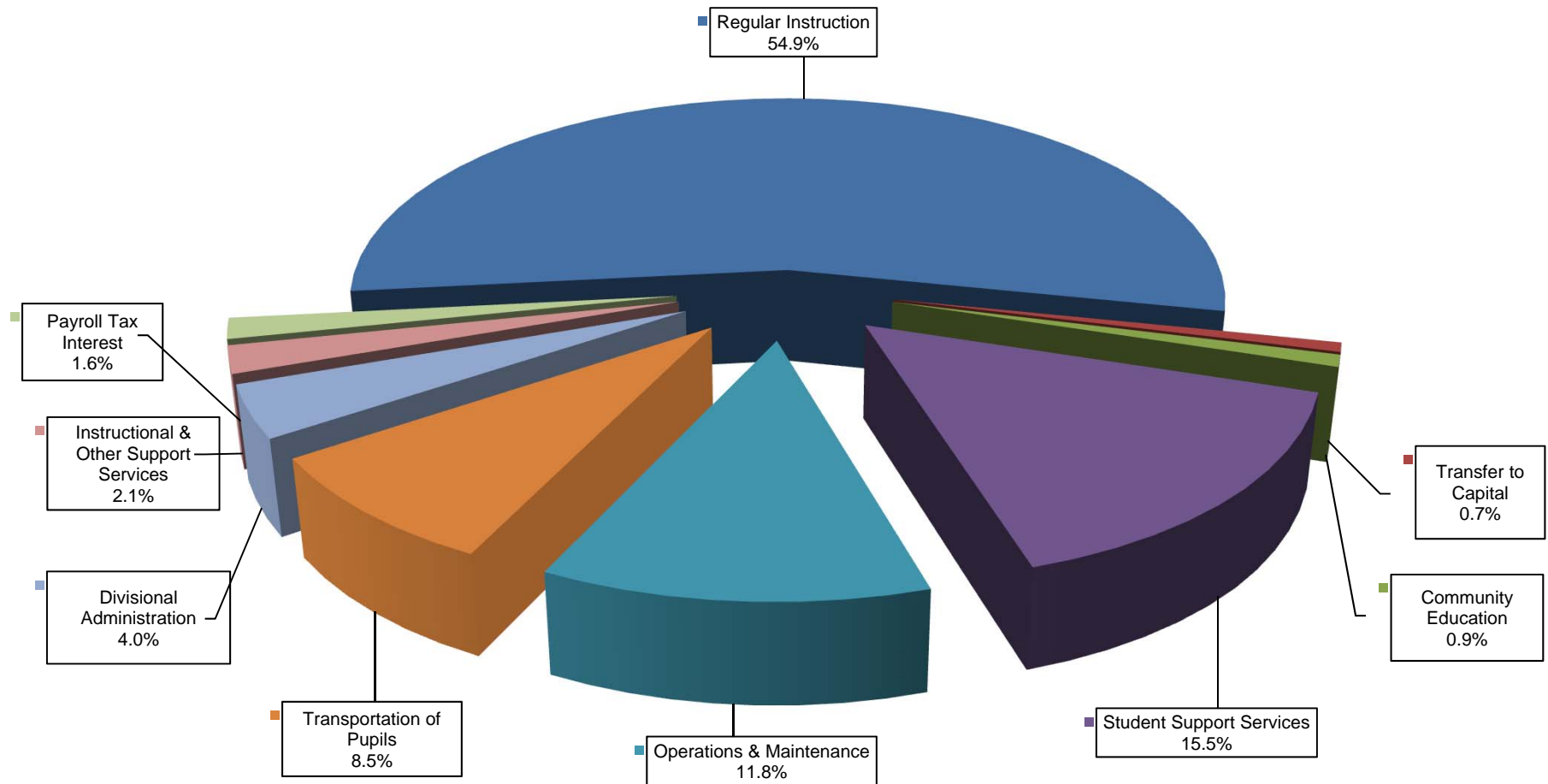


Salaries & Benefits account for 81.2% of Total Budget Expenditures (operating and transfers to capital)
Salaries & Benefits account for 81.8% of the Operating Budget



2016/17 Draft Budget

Operating and Capital Funds





How do expenses in the S.V.S.D. compare to other Divisions in the Province?

2013-2014 Cost Comparisons per Student (Actuals)		
	Provincial Average	S.V.S.D. Cost
Operating Fund Cost per Student	\$11,845	\$12,376
Regular Instruction	\$6,659	\$7,829
Student Services	\$2,235	\$2,143
Community Education & Services	1.0%	1.0%
Division Office Administration	\$403	\$552
Pupil Support Services	\$419	\$364
Transportation	\$525	\$1,101
Maintenance	\$1,396	\$1,535
Fiscal	\$207	\$216



How do expenses in the S.V.S.D. compare to other Divisions in the

2015-2016 Cost Comparisons per Student (Budget)		
	Provincial Average	S.V.S.D. Cost
Operating Fund Cost per Student	\$12,687	\$14,849
Regular Instruction	\$7,143	\$8,133
Student Services	\$2,365	\$2,478
Community Education & Services	1.0%	1.1%
Division Office Administration	\$444	\$616
Instructional Support Services	\$450	\$315
Transportation	\$560	\$1,327
Maintenance	\$1,500	\$1,745
Fiscal	\$224	\$235



Swan Valley School Division Compared

Based on 2015/16 Budget	Provincial Average	S.V.S.D. Cost
Operating Expenditure	\$12,687	\$14,849
Pupil/Educator Ratio	13.1	12.2
Pupil/Teacher Ratio	16.7	14.7
Direct Support to Pupils	78.5%	73.6%
Dollars per pupil (excludes Junior K)	\$9,958	\$10,926
2014 Mill Rate (includes Tax Incentive Grant)	14.3	16.7



Comparison SVSD and Western Region School Divisions

Source: 2015/2016 FRAME BUDGET SUMMARY

School Division	2015/2016 Budget Operating Expenditure Per Pupil
Beautiful Plains	\$11,164
Brandon	\$11,327
Fort La Bosse	\$12,754
Mountainview	\$12,799
Park West	\$14,087
Pine Creek	\$13,625
Prairie Spirit	\$13,777
Southwest Horizon	\$14,018
Swan Valley	\$14,849
Turtle Mountain	\$13,466
Turtle River	\$15,444



Comparison SVSD and Western Region School Divisions

Source: 2015/2016
FRAME BUDGET SUMMARY

School Division	2015/2016 Budget	
	Reg. Instruction Pupil/Teacher Ratio	Total Educator Pupil/Teacher Ratio
Beautiful Plains	16.1	13.8
Brandon	17.2	12.8
Fort La Bosse	15.9	13.3
Mountainview	16.1	13.2
Park West	13.8	11.4
Pine Creek	15.0	12.3
Prairie Spirit	15.1	12.5
Southwest Horizon	13.8	11.8
Swan Valley	14.7	12.2
Turtle Mountain	15.3	12.2
Turtle River	13.4	11.3
Western SD Average	17.3	14.3
Provincial Average	16.7	13.1



Comparison SVSD and Western Region School Divisions

Provincially, School Division Auditors have recommended that a School Division Operating Accumulated Surplus be maintained at 5 to 10% of the Operating Budget. The Provincial Government required that the Operating Accumulated Surplus be no more than 4% of the Operating Budget.

School Division	June 30, 2014 Accumulated Surplus	% of 2013/2014 Operating Exp.
Beautiful Plains	\$634,531	3.8%
Brandon	\$4,148,437	4.9%
Fort La Bosse	\$974,783	5.9%
Mountainview	\$1,661,699	4.4%
Park West	\$522,736	1.9%
Pine Creek	\$726,182	5.4%
Prairie Spirit	\$1,201,848	4.6%
Southwest Horizon	\$794,258	3.9%
Swan Valley	\$643,200	3.2%
Turtle Mountain	\$921,125	7.5%
Turtle River	\$391,662	3.7%
Western SD Average	\$762,681	4.5%
Provincial Average		4.7%



<u>Budget Comparison</u>	<u>2016 - 2017</u>	<u>2015 - 2016</u>	<u>Dollars</u>	<u>%</u>
Expenditures	21,265,101	20,765,673	499,428	2.41%
Less				
Provincial Funding	12,268,689	12,181,264	87,425	0.72%
Education Property Tax Credit (excludes Farm Land Rebate)	1,579,321	1,567,318	12,003	0.77%
Tax Incentive Grant	1,056,497	1,056,497	0	0.00%
Other Revenues	551,300	495,420	55,880	11.28%
Sub Total	5,809,294	5,465,174	344,120	6.30%
From Accumulated Surplus	82,578	48,091	34,487	71.7%
Special Requirement (Local Levy over 2 years)	5,726,716	5,417,083	309,633	5.72%
Mill Rate (Calendar Year)	13.436	16.673	(3.237)	(19.41%)
Special Levy (Calendar Year) Before Tax Credits	7,129,137	6,870,396	258,741	3.77%
Excludes Home Owner, Senior, and Farm Land Credits				

**2016 PORTIONED SCHOOL ASSESSMENT**

Feb 08 18 2016

Swan Valley School Division

Revised Jan 18, 2016

	42.29%	42.33%	15.39%	100.00%	
Municipality	Residential	Farm	Other	Total	Ratios
MUNICIPALITY OF MINITONAS-BOWSMAN	34,963,170	86,839,120	16,012,980	137,815,270	0.25973
MUNICIPALITY OF SWAN VALLEY WEST	73,612,580	123,251,480	14,227,740	211,091,800	0.39783
TOWN OF SWAN RIVER	108,175,650	77,770	50,249,980	158,503,400	0.29872
RM OF MOUNTAIN	7,624,380	14,432,220	1,145,810	23,202,410	0.04373
	<u>224,375,780</u>	<u>224,600,590</u>	<u>81,636,510</u>	<u>530,612,880</u>	<u>1.0000000</u>
Change	<u>34,670,930</u>	<u>74,734,920</u>	<u>9,139,840</u>	<u>118,545,690</u>	
% of Change/Increase	<u>18.28%</u>	<u>49.87%</u>	<u>12.61%</u>	<u>28.77%</u>	

2015 PORTIONED SCHOOL ASSESSMENT**Swan Valley School Division**

	46.04%	36.37%	17.59%	100.00%	
Municipality	Residential	Farm	Other	Total	Ratios
MUNICIPALITY OF MINITONAS-BOWSMAN	30,693,580	55,401,130	14,145,590	100,240,300	0.24326
MUNICIPALITY OF SWAN VALLEY WEST	58,667,440	82,113,270	13,331,160	154,111,870	0.37400
TOWN OF SWAN RIVER	93,867,050	73,760	43,931,040	137,871,850	0.33459
RM OF MOUNTAIN	6,476,780	12,277,510	1,088,880	19,843,170	0.04816
	<u>189,704,850</u>	<u>149,865,670</u>	<u>72,496,670</u>	<u>412,067,190</u>	<u>1</u>



	2016/17 Budget	2015/16 Budget	Increase (Decrease)	% Inc/(Dec)
SVSD Levy (Net Tax Incentive Grant)	7,129,137	6,870,396	258,741	3.77%
Mill Rate	13.436	16.673	(3.237)	(19.42%)
One Mill Raises	530,613	412,067	118,546	28.77%
Net of Tax Incentive Grant \$1,056,497				
		Proposed		
	2015 Levy	2016 Levy	Dollar	Percent
Property Type	16.673 mills	13.436 mills	Change	Change
Residential	3,162,949	3,014,638	(148,311)	(4.69%)
Farm	2,498,710	3,017,658	518,948	20.77%
Other/Commercial	1,208,737	1,096,841	(111,896)	(9.26%)
Total Levy	6,870,396	7,129,137	258,741	3.77%



Proposed 2016 Levy

- SVSD Levy Redistribution

Increased Cash Flow For 2016/17 Budget \$321,636		2016 Levy - TIG** 7,129,137	2015 Levy - TIG 6,870,396	Levy Increase 258,741	
Special Requirement \$8,362,534 up 4%					
		2016 Assessment	2015 Assessment	Variance	% of Change
Municipality					
MUNICIPALITY OF MINITONAS-BOWSMAN		1,851,640	1,671,306	180,333.37	10.79%
MUNICIPALITY OF SWAN VALLEY WEST		2,836,159	2,569,507	266,651.64	10.38%
TOWN OF SWAN RIVER		2,129,599	2,298,737	(169,139)	(7.36%)
RM OF MOUNTAIN		311,740	330,845	(19,105)	(5.77%)
SVSD Special Levy		7,129,137	6,870,396	258,741.00	3.77%
Mill Rate		13.436	16.673	(3.237)	(19.42%)



New SVSD Website

- Work will be commencing soon on a new SVSD website/educational portal
- SVSD will be acquiring rights to SchoolBundle, which is web product specifically designed for School Divisions
- www.schoolbundle.ca



Capital Projects

- SVSD Bldg. Construction Trades Shop
- ESRSS Wall Repair/Upgrade
- SVRSS Wall Repair/Metal Cladding

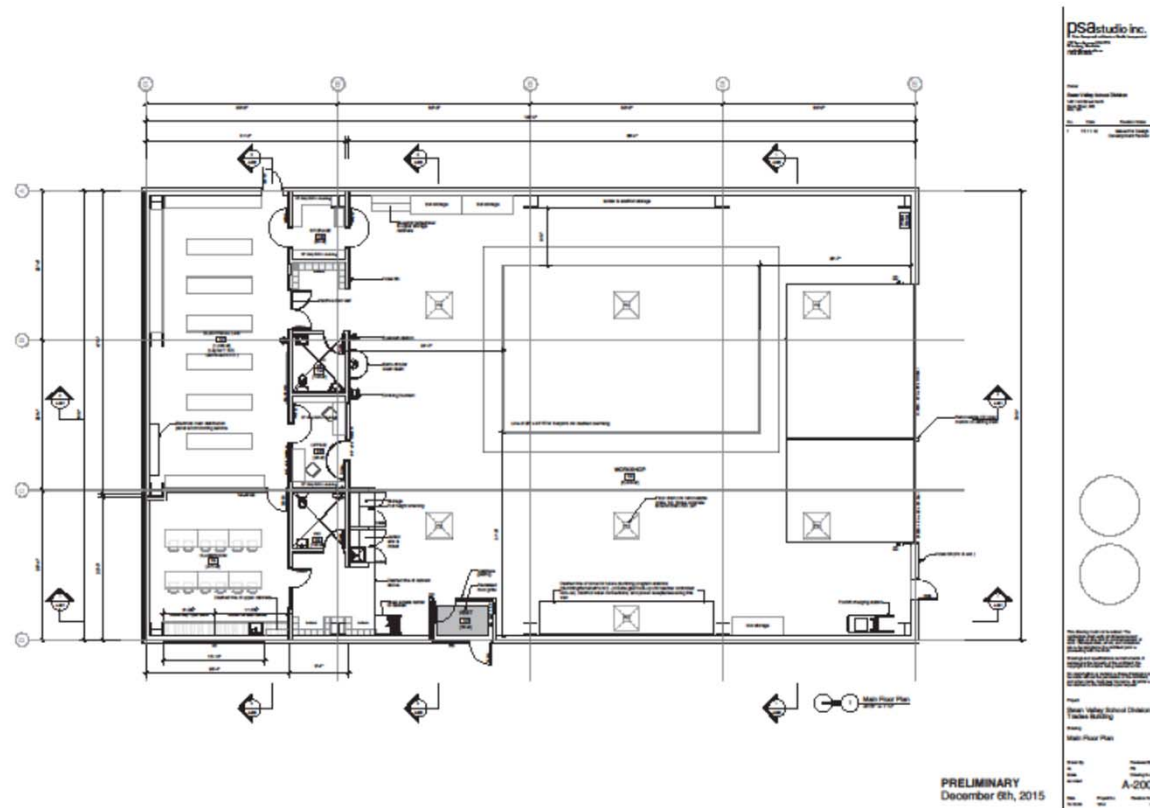


SVSD Bldg. Construction Trades Shop





SVSD Bldg. Construction Trades Shop



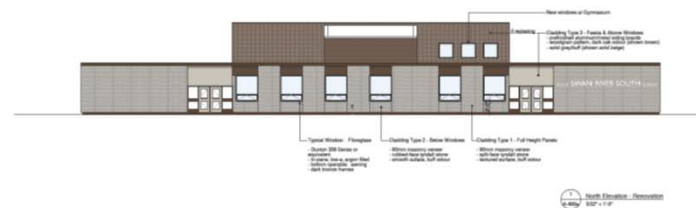
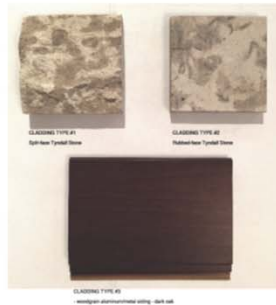


ESRSS Wall Repair/Upgrade





ESRSS Wall Repair/Upgrade



École Swan River South School
Exterior Elevations



Duan Valley Regional Secondary School - Envelope Upgrade
 Editing Envelope Diagrams
 2016.02.26



Questions Comments