

History 11- Shaping Canada

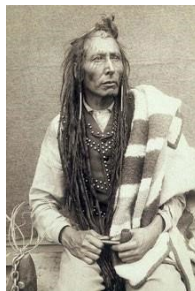
Course Outline



Assessment

Formative Assessment

- This is everyday work that is monitored, but does not count towards a final grade. It is an indicator of curriculum outcome comprehension that students have from competing work during class time or for homework. Observations, conversations with students and daily work will be used in this form of assessment.

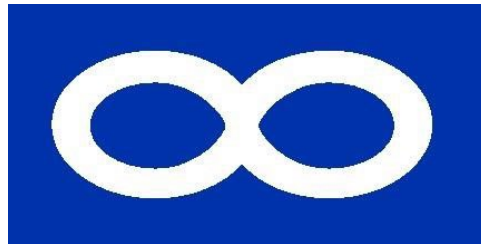


Summative Assessment

- This includes assignments, Essay's, tests and the exam. All summative assessments count towards a student's final grade.

Students, who do not complete formative work, may find summative work difficult.

When handing in History PROJECTS, your course work must include a cover sheet or the assignment may not be accepted.



Weighting

Tests	50%
Projects	20%
Exam	30%

Reasonable timelines will be set for all summative work. All efforts to complete assignments must be made. Students who know that they will not complete the work in the said timeline must communicate with the teacher.

There will be consequences for handing in assignments late. Penalties will range from deductions to the assignments not being accepted.

Digital Citizenship (Cell Phone Criteria):

Digital Citizenship competencies are essential if students are to live, learn and thrive within a 21st Century Global Society. The Swan Valley School Division and its schools are committed to supporting staff and students in this pursuit.

The SVSD believes that effective use of ICT enhances teaching and learning.

Teachers are responsible for acceptable technology use within the classroom community. Guidelines, code of conduct and consequences are communicated to each class on a regular basis.

CELL PHONES In SCHOOLS



Kindergarten to Grade 8 students:

banned from using cell phones during school hours, inclusive of breaks and lunch.



Grade 9 to 12 students:

banned from cell phone use during class time on campus and off campus but are permitted to responsible use of cell phones during break times and lunch.



Northern Lights Institute of Trades and Technology (NITT) students:

banned from cell phone use during class time on campus and off campus but are permitted to responsible use of cell phones during break times and lunch.

Teachers may direct Grade 9 to 12 students or NITT students to use cell phones for educational purposes.

Students with medical or diverse leaning needs may qualify for exceptions to the Administrative Procedure, however a Student Specific Plan will need to be created to accompany such an exception.

Swan Valley School Division is committed to equitable access to all learning activities by students, therefore, Divisional I.C.T. devices will always be the first option provided to students.



Staff are:

expected to use cell phones in a fashion that supports engaging learning environments and safe schools.

As per Manitoba Provincial Mandate
August 15, 2024



For the complete Provincial Mandate please visit:

<https://news.gov.mb.ca/news/index.html?item=64657>

Swan Valley School Division Policy:

www.svsd.ca/division/administrative-procedures/safe-schools/cell-phone-use



Chapters:

- **First Peoples**
- **Europeans Arrive**
- **The Northwest Fur Trade**
- **British Colonial Rule**
- **The Northwest Changes**
- **Confederation**
- **Metis Resistance**
- **Post-Confederation Life**
- **Aboriginals After Confederation**
- **Finding Social Justice**
- **The Second World War and Beyond**
- **Quebec and Canada**
- **National Unity**
- **Aboriginal Peoples Today**

Social Studies 9

Canada in the Contemporary World

Welcome to Grade 9 (Senior 1)

Room 211

Teacher: Mr. Khadekin



Assessment

Formative Assessment

- This is everyday work that is monitored, but does not count towards a final grade. It is an indicator of curriculum outcome comprehension that students have from competing work during class time or for homework. Observations, conversations with students and daily work will be used in this form of assessment.

Summative Assessment

- This includes assignments, quizzes, tests and the exam. All summative assessments count towards a student's final grade. Students, who do not complete formative work, may find summative work difficult.

When handing in Social Studies Projects, your course work must include a cover sheet, or the assignment may not be accepted.

Weighting

Tests	60%
Projects	20%
Exam	20%

Late assignments may not be accepted if a valid reason is not provided. Reasonable timelines will be set for all summative work. All efforts to complete assignments must be made. Students who know that they will not complete the work in the said timeline must communicate with the teacher.

There will be consequences for handing assignments late. Penalties will range from deductions, to the assignment not being accepted.

Digital Citizenship (Cell Phone Criteria):

Digital Citizenship competencies are essential if students are to live, learn and thrive within a 21st Century Global Society. The Swan Valley School Division and its schools are committed to supporting staff and students in this pursuit.

The SVSD believes that effective use of ICT enhances teaching and learning.

Teachers are responsible for acceptable technology use within the classroom community. Guidelines, code of conduct and consequences are communicated to each class on a regular basis.

CELL PHONES In SCHOOLS



Kindergarten to Grade 8 students:

banned from using cell phones during school hours, inclusive of breaks and lunch.



Grade 9 to 12 students:

banned from cell phone use during class time on campus and off campus but are permitted to responsible use of cell phones during break times and lunch.



Northern Lights Institute of Trades and Technology (NITT) students:

banned from cell phone use during class time on campus and off campus but are permitted to responsible use of cell phones during break times and lunch.

Teachers may direct Grade 9 to 12 students or NITT students to use cell phones for educational purposes.

Students with medical or diverse leaning needs may qualify for exceptions to the Administrative Procedure, however a Student Specific Plan will need to be created to accompany such an exception.

Swan Valley School Division is committed to equitable access to all learning activities by students, therefore, Divisional I.C.T. devices will always be the first option provided to students.



Staff are:

expected to use cell phones in a fashion that supports engaging learning environments and safe schools.

As per Manitoba Provincial Mandate
August 15, 2024



For the complete Provincial Mandate please visit:

<https://news.gov.mb.ca/news/index.html?Item=64657>

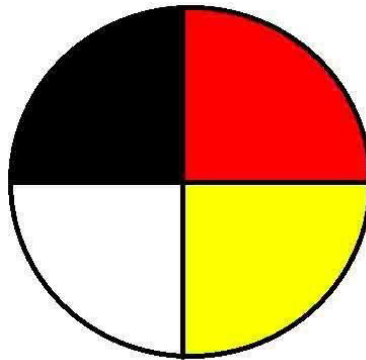
Swan Valley School Division Policy:

www.svsd.ca/division/administrative-procedures/safe-schools/cell-phone-use



First Nations, Metis, Inuit Studies

Course Outline



Guiding principles:

Education for and about First Nations, Métis, and Inuit peoples.

- Building bridges of understanding and respect between Indigenous and nonIndigenous Canadians.
- Promotes personal and social responsibility.
- Connects the learner to family and to local, national, and global communities.

Objectives:

The course is inclusive of the traditional values and worldviews of First Nations, Métis, and Inuit peoples. The objective of Current Topics in First Nations, Métis, and Inuit Studies is to provide both Indigenous and non-Indigenous students with knowledge of Indigenous cultures and traditions, and to encourage Indigenous students to take pride in the accomplishments of their peoples. This knowledge will enable Indigenous students to participate meaningfully as citizens of their cultural community, of contemporary Canadian society, and as active and engaged global citizens. Non-Indigenous students will become knowledgeable of the worldviews, histories, cultures, and accomplishments of Indigenous peoples, and thus be able to engage in

an informed and empathetic manner in debates concerning Indigenous issues at local, national, and global levels.



Rationale:

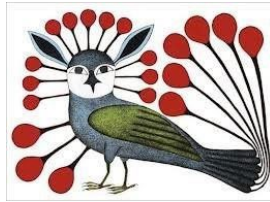
According to the Aboriginal Peoples Survey by Statistics Canada, in Manitoba the majority of Indigenous people live in an urban setting, including 44 percent of the more than 90,000 First Nations inhabitants, 70 percent of the almost 60,000 Métis, and the majority of the small (300 plus) Manitoba Inuit population. The clear implication of these statistics is the increasing engagement of Indigenous people within the larger Canadian society. The combined knowledge of both mainstream and Indigenous cultures will enable Indigenous and non-Indigenous Canadians alike to live and work together harmoniously to create an equitable society for the betterment of all Canadians.

Goals

Current Topics in First Nations, Métis, and Inuit Studies offers all Grade 12 students, both Indigenous and non-Indigenous, an opportunity to:

- Enhance their understanding and appreciation of the cultures and traditions, as well as the contemporary realities and aspirations of First Nations, Métis, and Inuit cultures in Manitoba, Canada, and the world.
- Develop a knowledge of the history of First Nations, Métis, and Inuit peoples in Canada in order to better understand the present.
- Develop a sense of comfort and confidence in interactions with First Nations, Métis, and Inuit people.

- Develop an understanding that First Nations, Métis, and Inuit peoples and cultures are an integral part of Canadian society.
- Recognize the ongoing role of First Nations, Métis, and Inuit peoples in shaping Canadian history and identity.



Current Topics in First Nations, Métis, and Inuit Studies offers First Nations, Métis, and Inuit students an opportunity to explore fundamental questions:

- Who am I?
 - Where have I come from?
 - Why am I here?
 - Where am I going?).
- **By doing so, students are better able to:**
 - Further their understanding of the issues facing their communities and cultures.
 - Build upon and extend knowledge of their cultures and traditions.
 - Develop pride in the contributions of their cultures to Canadian society and the world
 - Build upon and enhance positive self-identity.
 - Function effectively as members of their local, national, and global communities.
 - Envision their place in the future of their community and country.

Weighting:

Exam: 30%

Projects: 40%

Tests: 30%

Structure and Time Allotments in Current Topics in First Nations, Métis, and Inuit Studies Current Topics in First Nations, Métis, and Inuit Studies is structured around the following five thematic clusters:

- I. Image and Identity (10%)*
- II. Relations with Government (40%)*
- III. Social Justice Issues (30%)*
- IV. Indigenous Peoples and the World (10%)*
- V. Celebrations of Learning (10%)*

Digital Citizenship (Cell Phone Criteria):

Digital Citizenship competencies are essential if students are to live, learn and thrive within a 21st Century Global Society. The Swan Valley School Division and its schools are committed to supporting staff and students in this pursuit.

The SVSD believes that effective use of ICT enhances teaching and learning.

Teachers are responsible for acceptable technology use within the classroom community. Guidelines, code of conduct and consequences are communicated to each class on a regular basis.

CELL PHONES

In SCHOOLS



Kindergarten to Grade 8 students:

banned from using cell phones during school hours, inclusive of breaks and lunch.



Grade 9 to 12 students:

banned from cell phone use during class time on campus and off campus but are permitted to responsible use of cell phones during break times and lunch.



Northern Lights Institute of Trades and Technology (NITT) students:

banned from cell phone use during class time on campus and off campus but are permitted to responsible use of cell phones during break times and lunch.

Teachers may direct Grade 9 to 12 students or NITT students to use cell phones for educational purposes.

Students with medical or diverse learning needs may qualify for exceptions to the Administrative Procedure, however a Student Specific Plan will need to be created to accompany such an exception.

Swan Valley School Division is committed to equitable access to all learning activities by students, therefore, Divisional I.C.T. devices will always be the first option provided to students.



Staff are:

expected to use cell phones in a fashion that supports engaging learning environments and safe schools.

As per Manitoba Provincial Mandate
August 15, 2024



For the complete Provincial Mandate please visit:

<https://news.gov.mb.ca/news/index.html?item=64657>

Swan Valley School Division Policy:

www.svsd.ca/division/administrative-procedures/safe-schools/cell-phone-use



Grade 10

Grade 20-Geographical Issues

Welcome to Grade 10 Geography!

The awesome things you will learn are as follows:

- **Maps: Geography's Basic Tools**
- **Locating Places on a Map**
- **Using Map Scales**
- **Geologic History**
- **Landform Connections-Glaciers in Canada**
- **Climate Connections**
- **Soil and Vegetation Connections**
- **Food From the Land**
- **Canada's Mineral Wealth**

Digital Citizenship (Cell Phone Criteria):

Digital Citizenship competencies are essential if students are to live, learn and thrive within a 21st Century Global Society. The Swan Valley School Division and its schools are committed to supporting staff and students in this pursuit.

The SVSD believes that effective use of ICT enhances teaching and learning.

Teachers are responsible for acceptable technology use within the classroom community. Guidelines, code of conduct and consequences are communicated to each class on a regular basis.

CELL PHONES In SCHOOLS



Kindergarten to Grade 8 students:

banned from using cell phones during school hours, inclusive of breaks and lunch.



Grade 9 to 12 students:

banned from cell phone use during class time on campus and off campus but are permitted to responsible use of cell phones during break times and lunch.



Northern Lights Institute of Trades and Technology (NITT) students:

banned from cell phone use during class time on campus and off campus but are permitted to responsible use of cell phones during break times and lunch.

Teachers may direct Grade 9 to 12 students or NITT students to use cell phones for educational purposes.

Students with medical or diverse leaning needs may qualify for exceptions to the Administrative Procedure, however a Student Specific Plan will need to be created to accompany such an exception.

Swan Valley School Division is committed to equitable access to all learning activities by students, therefore, Divisional I.C.T. devices will always be the first option provided to students.



Staff are:

expected to use cell phones in a fashion that supports engaging learning environments and safe schools.

As per Manitoba Provincial Mandate
August 15, 2024



For the complete Provincial Mandate please visit:

<https://news.gov.mb.ca/news/index.html?item=64657>

Swan Valley School Division Policy:

www.svsd.ca/division/administrative-procedures/safe-schools/cell-phone-use



Assessment

Formative Assessment

- This is everyday work that is monitored, but does not count towards a final grade. It is an indicator of curriculum outcome comprehension that students have from competing work during class time or for homework. Observations, conversations with students and daily work will be used in this form of assessment.

Summative Assessment

- This includes assignments, quizzes, tests and the exam. All summative assessments count towards a student's final grade. Students, who do not complete formative work, may find summative work difficult.

Weighting

Tests	60%
Projects	20%
Exam	20%

